



# DOUBLE SIDED TAPES SAMPLE KIT

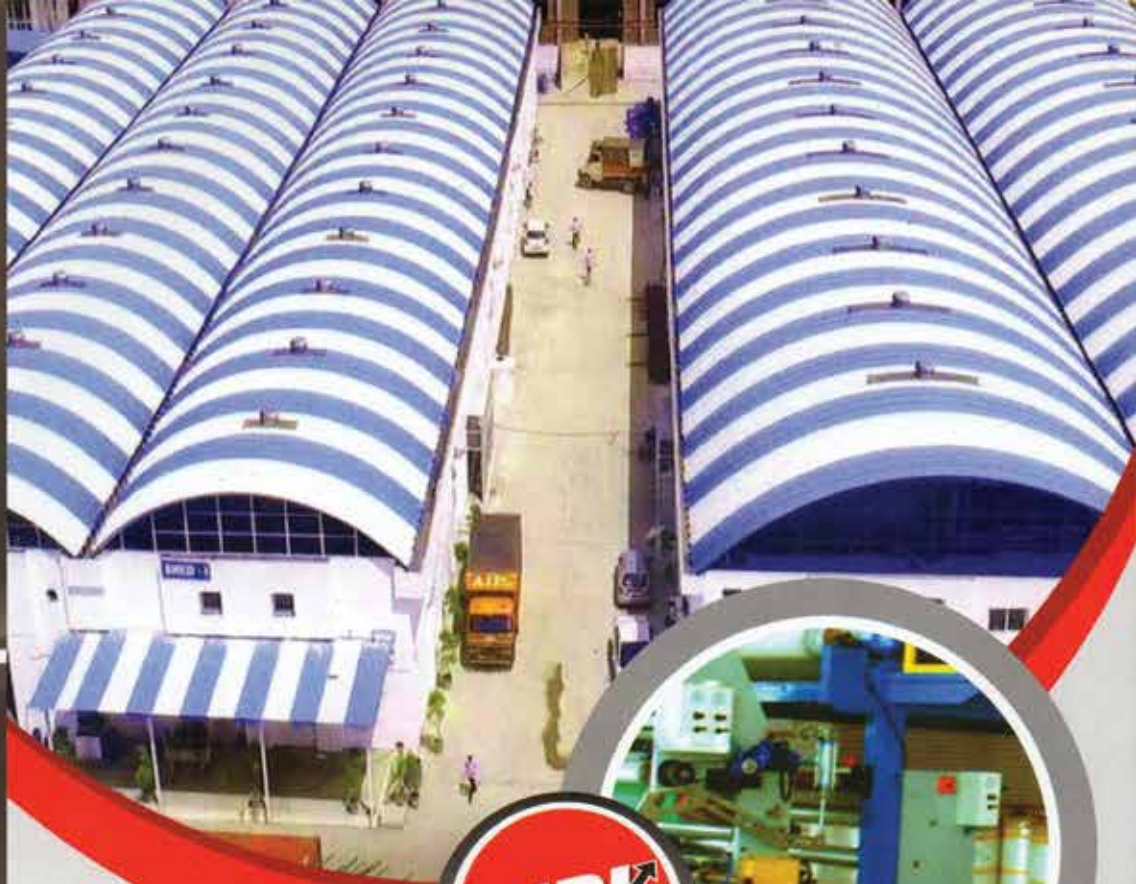


**KARMA**  
EXPORTS

[www.karmaexports.in](http://www.karmaexports.in)



strong smart stable



- We are the No. 1 Tape company in North India, headquartered in New Delhi.
- Listed amongst the top 5 Tape Companies in India.
- 3 Dedicated adhesive tape factories across the country.
  - at Sonipat Haryana.
  - at Chennai Industrial Area, Tamil Nadu.
  - at Bhiwandi, Mumbai, Maharashtra.
- Over 400+ staff spread across Industry verticals including 40 plus sales staff PAN India.
- Export of Tapes : Started in 2018 and projected to grow at a rapid pace across the globe.
- Turnover of 320 Cr for Fiscal 2018 ~ 19.



ISO - 14001



IATF 16949:2016



SGS



Bureau of Indian Standard (ISI)



Under Writer Laboratory (UL)







www.ajitindustries.com

**EZ910 - DS NON-WOVEN TISSUE**

Total Thickness $\mu$ (micron) : 100	Shear Strength (Hours) : > 150
Liner Thickness $\mu$ (micron) : 135	Ball Tack (CM) : 3.8
Peel Strength N/25(mm) : 18-19	Temperature Range (°C) : -30 ~ 150
Elongation at break (%) : 5	Peel strength to low Energy surface : + + + + +

Applications - Specially formulated for low surface energy foams like PDM/PU/PE Rubber gaskets, trims, labels, Fabrics.

**EZ809 - DS NON-WOVEN TISSUE**

Total Thickness $\mu$ (micron) : 130	Shear Strength (Hours) : > 150
Liner Thickness $\mu$ (micron) : 135	Ball Tack (CM) : 3
Peel Strength N/25(mm) : 23-24	Temperature Range (°C) : -30 ~ 150
Elongation at break (%) : 5	Peel strength to low Energy surface : + + + + +

Applications - Specially formulated for low surface energy foams like PDM/PU/PE Rubber gaskets, trims, labels, Fabrics.

**EZ310 - DS NON-WOVEN TISSUE**

Total Thickness $\mu$ (micron) : 160	Shear Strength (Hours) : > 150
Liner Thickness $\mu$ (micron) : 135	Ball Tack (CM) : 2.5
Peel Strength N/25(mm) : 25-26	Temperature Range (°C) : -30 ~ 150
Elongation at break (%) : 5	Peel strength to low Energy surface : + + + + +

Applications - Specially formulated for low surface energy foams like PDM/PU/PE Rubber gaskets, trims, labels, Fabrics.

**EZ8015 - DS NON-WOVEN TISSUE**

Total Thickness $\mu$ (micron) : 160	Shear Strength (Hours) : > 150
Liner Thickness $\mu$ (micron) : 135	Ball Tack (CM) : 2.5
Peel Strength N/25(mm) : 25-26	Temperature Range (°C) : -30 ~ 150
Elongation at break (%) : 5	Peel strength to low Energy surface : + + + + +

Applications - Specially formulated for low surface energy foams like PDM/PU/PE Rubber gaskets, trims, labels, Fabrics.

**EZ812 - DS NON-WOVEN TISSUE LOW VOC**

Total Thickness $\mu$ (micron) : 130	Shear Strength (Hours) : > 150
Liner Thickness $\mu$ (micron) : 135	Ball Tack (CM) : 3
Peel Strength N/25(mm) : 23-24	Temperature Range (°C) : -30 ~ 150
Elongation at break (%) : 5	Peel strength to low Energy surface : + + + + +

Applications - LOW VOC Specially formulated for low surface energy foams like PDM/PU/PE Rubber gaskets, trims, labels, Fabrics.

**EZ5050 - DS NON-WOVEN TISSUE**

Total Thickness $\mu$ (micron) : 130	Shear Strength (Hours) : > 150
Liner Thickness $\mu$ (micron) : 135	Ball Tack (CM) : 3
Peel Strength N/25(mm) : 23-24	Temperature Range (°C) : -30 ~ 150
Elongation at break (%) : 5	Peel strength to low Energy surface : + + + + +

Applications - Specially formulated for low surface energy foams like PDM/PU/PE Rubber gaskets, trims, labels, Fabrics.

**521P - DS NON-WOVEN TISSUE**

Total Thickness $\mu$ (micron) : 100	Shear Strength (Hours) : > 25
Liner Thickness $\mu$ (micron) : 100	Ball Tack (CM) : 5.1
Peel Strength N/25(mm) : 20	Temperature Range (°C) : -30 ~ 85
Elongation at break (%) : 5	Peel strength to low Energy surface : + + + + +

Applications - Mounting of name plates, foam lamination, splicing of films/fabric/paper/ boards.

**EZ500 - DS NON-WOVEN TISSUE**

Total Thickness $\mu$ (micron) : 170	Shear Strength (Hours) : > 25
Liner Thickness $\mu$ (micron) : 125	Ball Tack (CM) : 3.1
Peel Strength N/25(mm) : 20	Temperature Range (°C) : -30 ~ 100
Elongation at break (%) : 5	Peel strength to low Energy surface : + + + + +

Applications - Mounting of PC /Metal/PVC labels & profiles, Bonding of Low energy materials with excellent repulsion resistance.



EZ910 - DS NON-WOVEN TISSUE



EZ809 - DS NON-WOVEN TISSUE



EZ310 - DS NON-WOVEN TISSUE



EZ8015 - DS NON-WOVEN TISSUE



EZ812 - DS NON-WOVEN TISSUE LOW VOC



EZ5050 - DS NON-WOVEN TISSUE



521P - DS NON-WOVEN TISSUE



EZ500 - DS NON-WOVEN TISSUE



**P-635 - DS NON-WOVEN TISSUE**

Total Thickness $\mu$ (micron) : 60	Shear Strength (Hours) : >24
Liner Thickness $\mu$ (micron) : 100	Ball Tack (CM) : 6.5
Peel Strength N/25(mm) : 9.8	Temperature Range ( $^{\circ}$ C) : 70
Elongation at break (%) : 3	Peel strength to low Energy surface : ++

Applications - PC, PP label mounting, splicing, leather beedings.



P-635 - DS NON-WOVEN TISSUE

**P-636 - DS NON-WOVEN TISSUE**

Total Thickness $\mu$ (micron) : 90	Shear Strength (Hours) : >24
Liner Thickness $\mu$ (micron) : 100	Ball Tack (CM) : 5.2
Peel Strength N/25(mm) : 11.8	Temperature Range ( $^{\circ}$ C) : 70
Elongation at break (%) : 3	Peel strength to low Energy surface : +++

Applications - Splicing-paper/film/fabric. Mounting of nome plates metal and polycarbonate.



P-636 - DS NON-WOVEN TISSUE

**P-637 - DS NON-WOVEN TISSUE**

Total Thickness $\mu$ (micron) : 60	Shear Strength (Hours) : >24
Liner Thickness $\mu$ (micron) : 100	Ball Tack (CM) : 2.5
Peel Strength N/25(mm) : 7.9	Temperature Range ( $^{\circ}$ C) : 60
Elongation at break (%) : 3	Peel strength to low Energy surface : ++

Applications - PC, PP label mounting, splicing, leather beeding.



P-637 - DS NON-WOVEN TISSUE

**TT130X - TRANSFER TAPE PET SCRIM-SOLVENT BASE**

Total Thickness $\mu$ (micron) : 50	Shear Strength (Hours) : >96
Liner Thickness $\mu$ (micron) : 80	Ball Tack (CM) : 1.5
Peel Strength N/25(mm) : 20	Temperature Range ( $^{\circ}$ C) : 120
Elongation at break (%) : -----	Peel strength to low Energy surface : +++++

Applications - Foam and fabric lamination, and box sealing.



TT130X - TRANSFER TAPE PET SCRIM-SOLVENT BASE

**TT131 - TRANSFER TAPE-SOLVENT BASE**

Total Thickness $\mu$ (micron) : 50	Shear Strength (Hours) : >96
Liner Thickness $\mu$ (micron) : 80	Ball Tack (CM) : 1
Peel Strength N/25(mm) : 20	Temperature Range ( $^{\circ}$ C) : 120
Elongation at break (%) : -----	Peel strength to low Energy surface : +++

Applications - Foam and fabric lamination, and box sealing. Mounting of PC, PET, Alu metal labels



TT131 - TRANSFER TAPE-SOLVENT BASE

**TT138 - TRANSFER TAPE-HM**

Total Thickness $\mu$ (micron) : 50	Shear Strength (Hours) : >96
Liner Thickness $\mu$ (micron) : 80	Ball Tack (CM) : 1
Peel Strength N/25(mm) : 40	Temperature Range ( $^{\circ}$ C) : 50
Elongation at break (%) : -----	Peel strength to low Energy surface : +++

Applications - Fabric and Felt lamination.



TT138 - TRANSFER TAPE-HM

**DP25 - DS PET-HM**

Total Thickness $\mu$ (micron) : 90	Shear Strength (Hours) : >20
Liner Thickness $\mu$ (micron) : 80	Ball Tack (CM) : 4.3
Peel Strength N/25(mm) : 15	Temperature Range ( $^{\circ}$ C) : 50
Elongation at break (%) : 70	Peel strength to low Energy surface : +++

Applications - Roll to roll splicing of films, Mounting of metal and PC/PVC labels, Edge sealing.



DP25 - DS PET-HM

**P93I - DS PET SOLVENT BASE**

Total Thickness $\mu$ (micron) : 210	Shear Strength (Hours) : >100
Liner Thickness $\mu$ (micron) : 90	Ball Tack (CM) : 2
Peel Strength N/25(mm) : 24	Temperature Range ( $^{\circ}$ C) : 200 (30min)
Elongation at break (%) : 70	Peel strength to low Energy surface : +++++

Applications - Splicing of metals, flex joints, Mounting of ABS plastic parts in the car industry, Self-adhesive mounting of rubber/EPDM profiles, Mounting of decorative profiles and mouldings in the furniture industry, Mounting of battery packs, lenses and touch-screens in electronic devices.



P93I - DS PET SOLVENT BASE

**AP225W - DS PET SOLVENT BASE**

Total Thickness $\mu$ (micron) : 110	Shear Strength (Hours) : >25
Liner Thickness $\mu$ (micron) : 120	Ball Tack (CM) : 3.1
Peel Strength N/25(mm) : 20	Temperature Range ( $^{\circ}$ C) : 80
Elongation at break (%) : 70	Peel strength to low Energy surface : ++++

Applications - Mounting of decorative profiles, Paper board splicing, Core starting.



AP225W - DS PET SOLVENT BASE



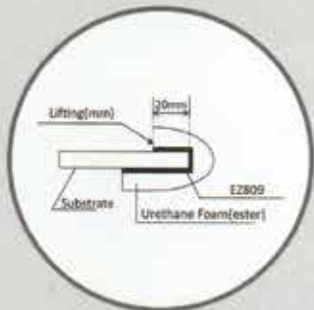


www.ajitindustries.com

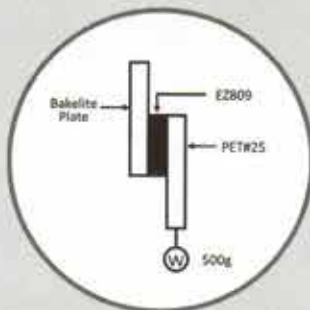
**KARMA**  
EXPORTS

## INDUSTRIAL APPLICATIONS OF DOUBLE SIDED TAPES

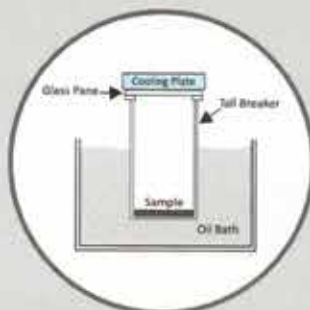
AIPL DS Tapes go through and conform to various tests at different stages to ensure the highest standard of quality. Our standards of quality not only measure the performance of the products but are also done to study its effects on users & environment. The objective is to make high-performance and safe to use products for our clients. A few of parameter & tests that are performed before our products reach you are :



**High Cohesion**  
Resistance to repulsion Test



**High Shear Strength**  
Holding power Test



**LOW VOC**  
Fogging Test



## INDUSTRIES WE SERVE



Packaging & Label Industry



Signage Industry



HVAC Industry



Surface Protection Tapes



Automobile Industry



Paper Mills & Print Industry



White Goods Industry



Conspicuity Tapes



Refrigeration Industry



Wire Harness Industry



Electrical & Electronic Industry



Construction Industry

### Authorised Exporters

#### **KARMA EXPORTS**

50, Maddox Street, Near Veterinary College,  
Vepery, Chennai - 600 007, South India.

e mail : [info@karmaexports.in](mailto:info@karmaexports.in)

Tel : +91 44 2661 0819

+91 97908 40995, +91 7708370525, +91 86759 99222

web : [www.karmaexports.in](http://www.karmaexports.in)

**KARMA**  
EXPORTS